

## Additional core acceptance criteria

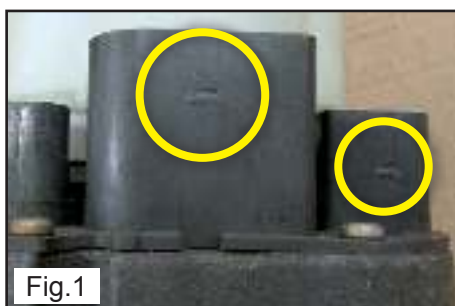
In order to ease the return procedure for the workshops, TRW decided to expand the core return acceptance criteria for the following electrical steering pumps:

JER104, JER105, JER106, JER110, JER111, JER112, JER113, JER114, JER115, JER117, JER118, JER134, JER155, JER156, JER157, JER158, JER161, JER162, JER165, JER166, JER171 and JER174

From now on, the following slight damages are accepted:

### Missing beaks (Fig.1)

*No further damages on connector!*



### Damaged tank (Fig.2)

*No damages on inner parts!*



### Slightly damaged lower housing (Fig.3)

*No cracks!*



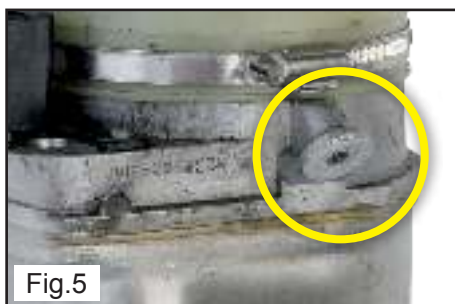
### Slightly, thermal damaged connector (Fig.4)

*No further damages on connector!*



### Lost rubber-metal fitting (Fig.5)

*No damages on thread or housing !*



**Complete core return criteria - described in the TRW Service Information XZS116D - needs to be precisely observed!**

